

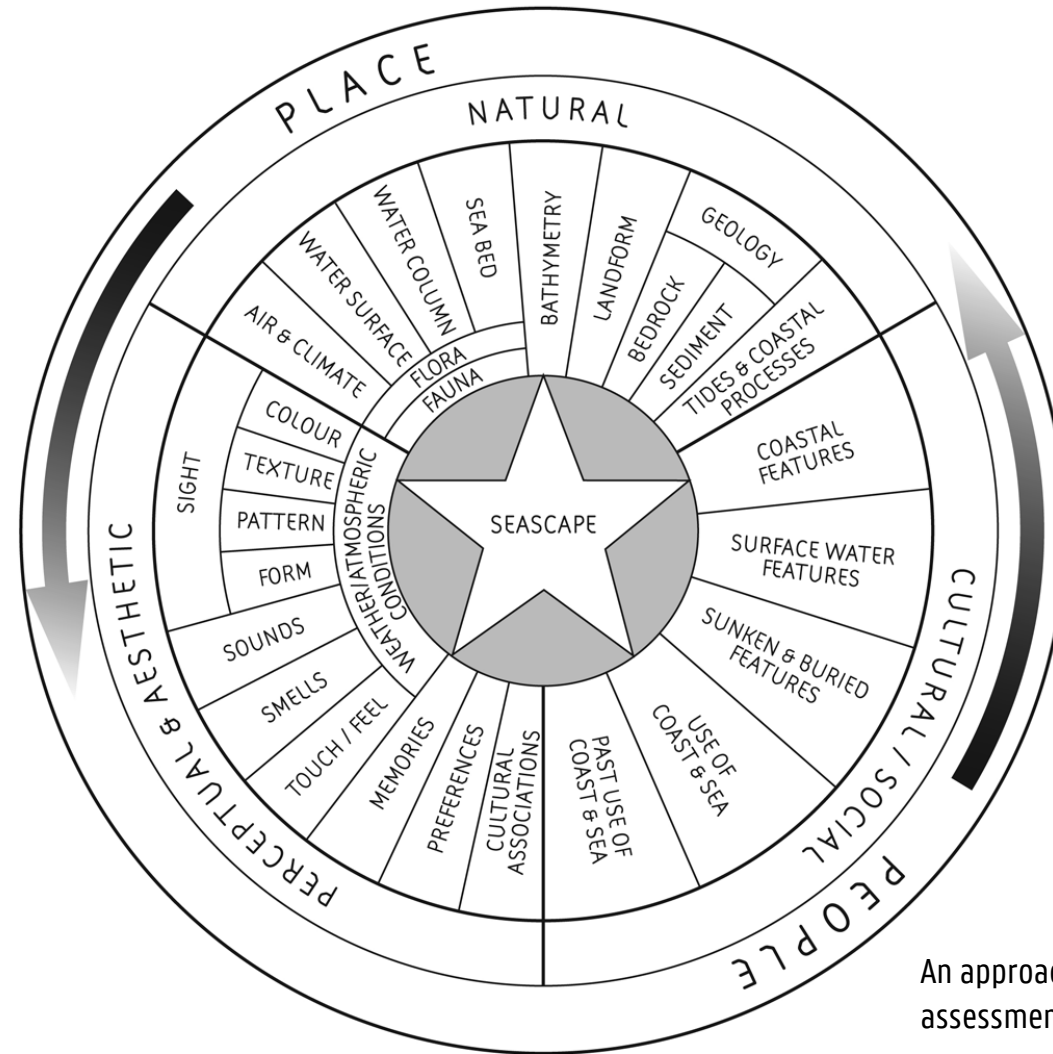
WHERE LAND MEETS SEA

CHARACTERISING ODSHERRED'S SEASCAPE

Anna Deckmyn - Elise De Mulder - Jasper Depuydt - Xander Luyckx - Maurien Stroobant



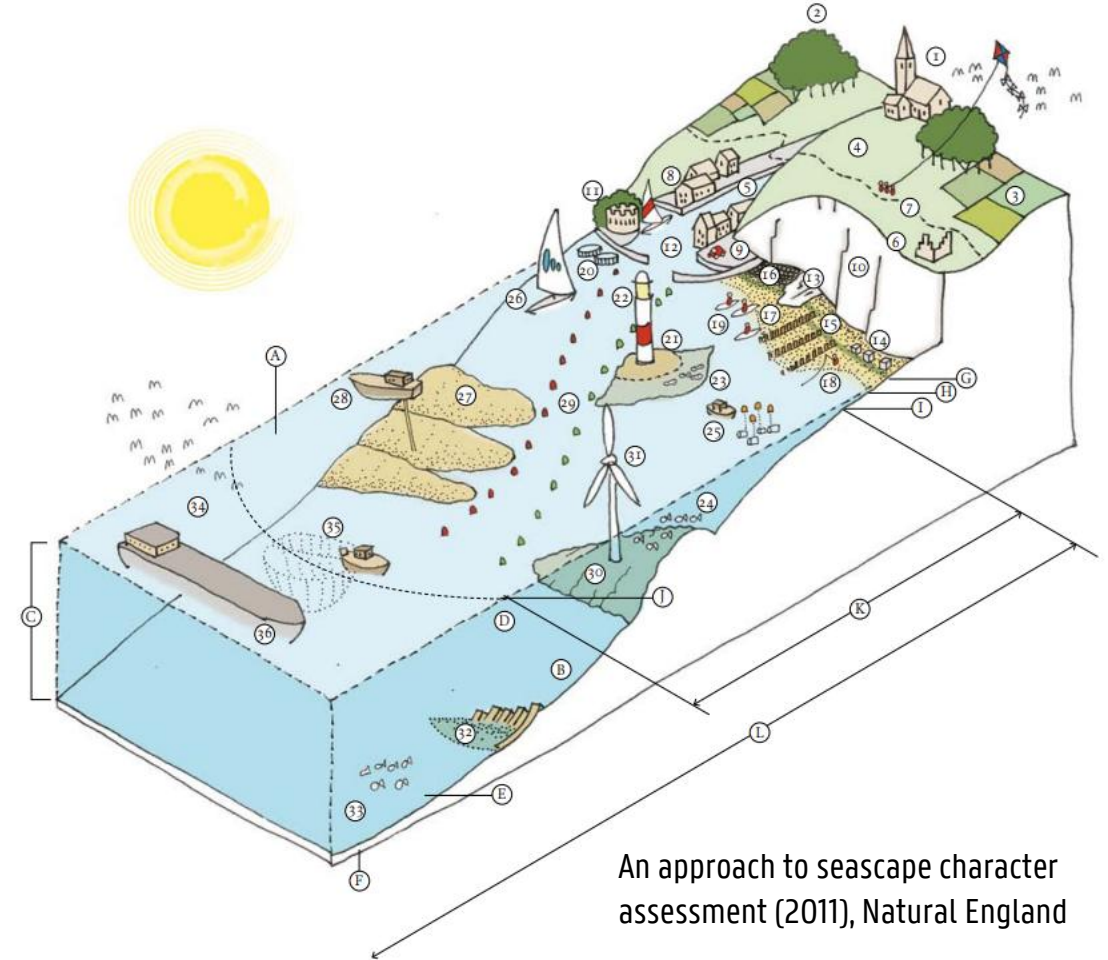
SEASCAPE DEFINITION



An approach to seascape character assessment (2011), Natural England

RELEVANCE AND MOTIVATION

- (Marine) spatial planning
 - Planning activities
 - Sustainable development
- Connection with landscape character assessment (LCA)



LANDSCAPE CHARACTER ASSESSMENT



Landskabsanalyse (2013), Odsherred Kommune.



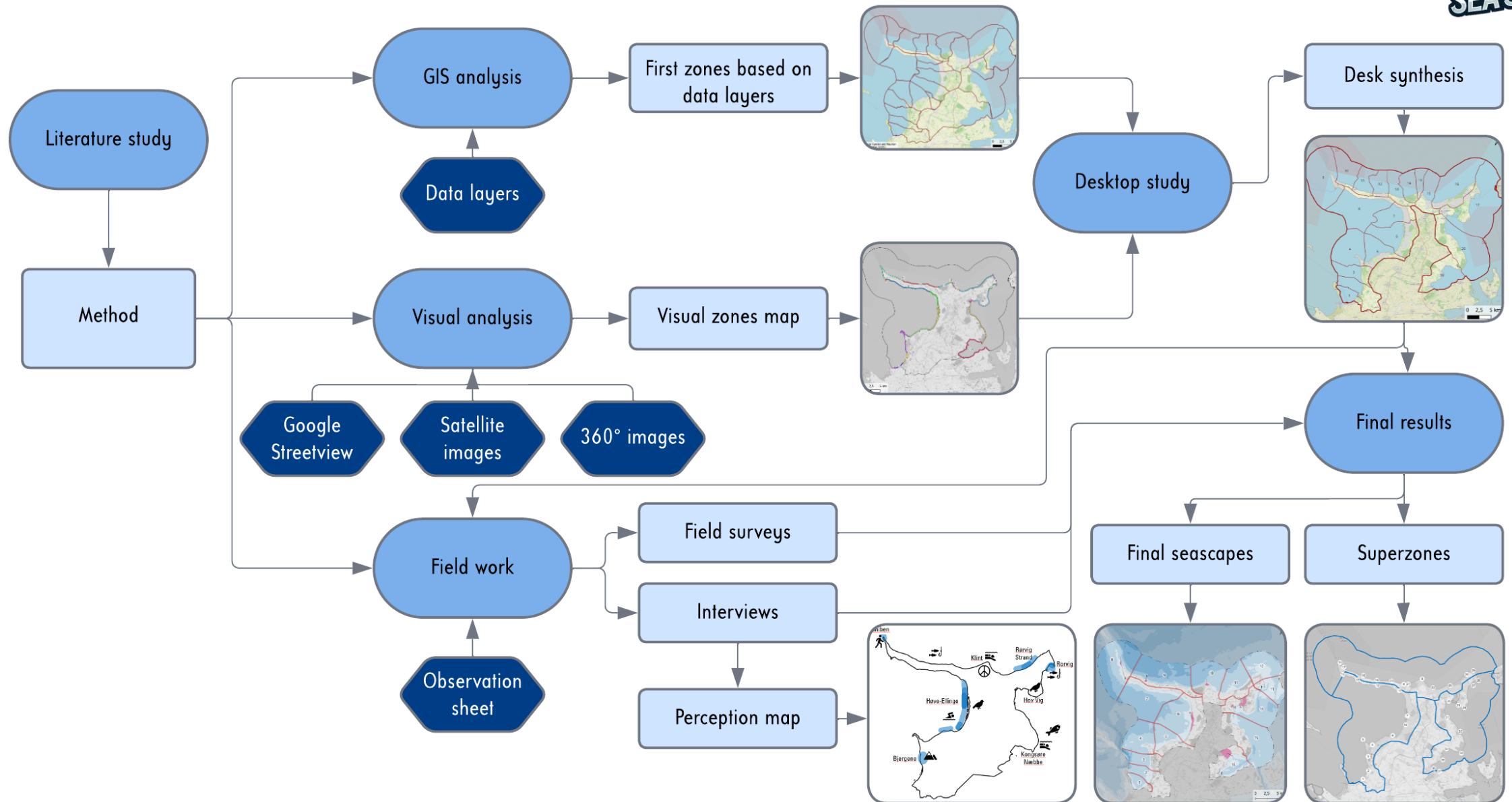
DISCOVERING ODSHERRED,
A TRAVEL THROUGH ITS DISTINCTIVE LANDSCAPES (2024), Lemmens et al



RESEARCH QUESTION

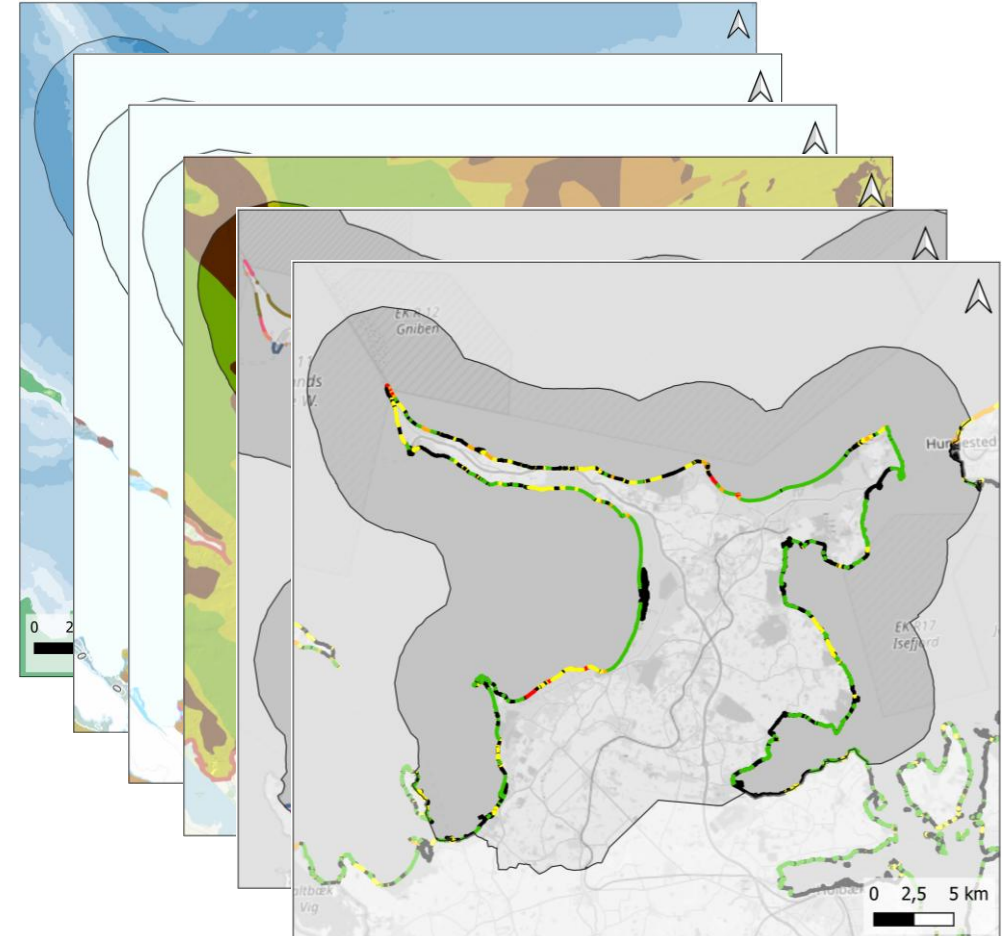
*How to develop a **seascape characterisation** for the sea and coast of Odsherred while identifying the unique characteristics of each seascape?*

METHOD



METHODOLOGICAL APPROACH - DATA

- Height/depth
- Geomorphology
- Geology
- Seabed sediment
- Coast types
- Coast protection
- Erosion

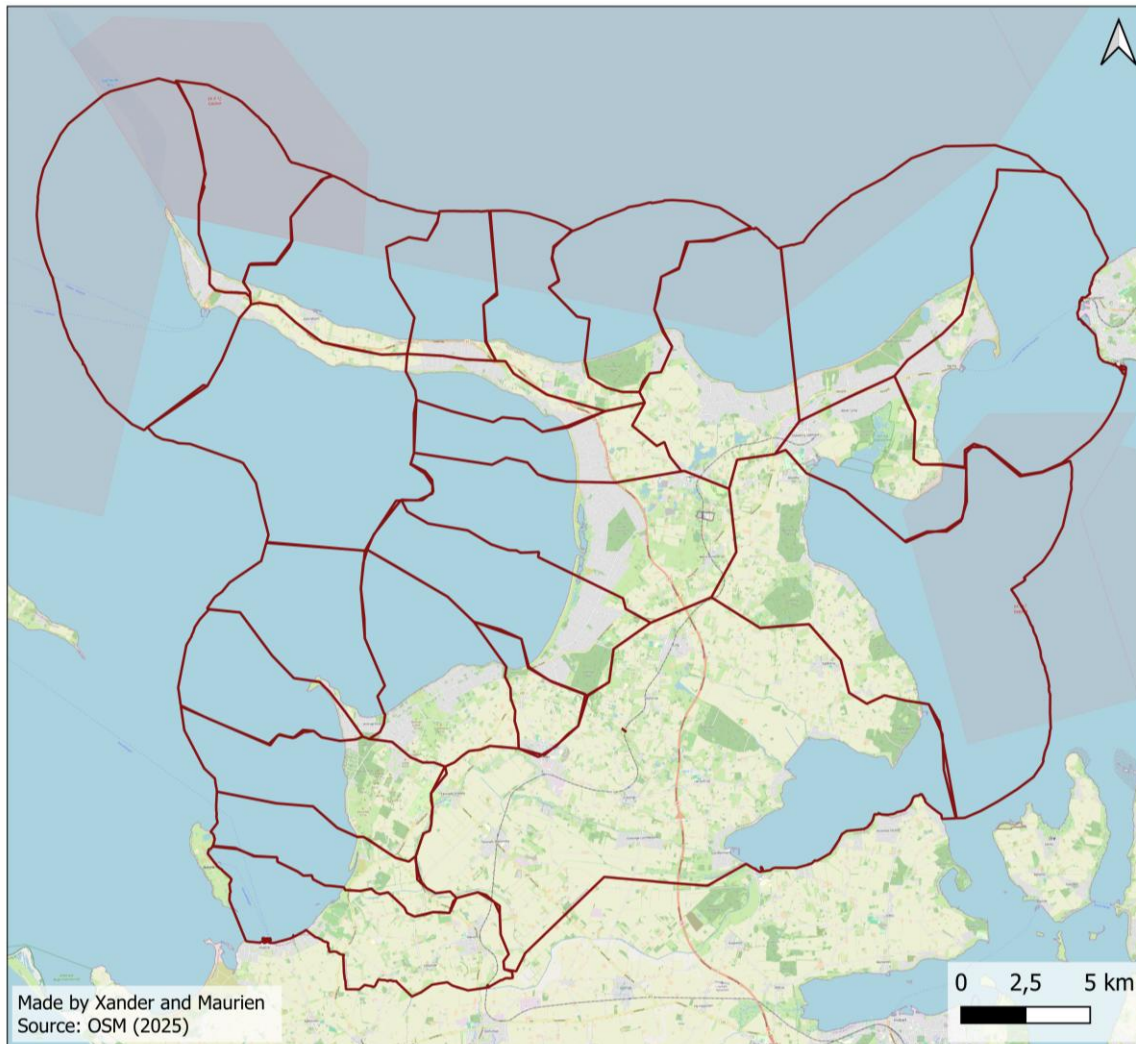


METHODOLOGICAL APPROACH – FIELD WORK

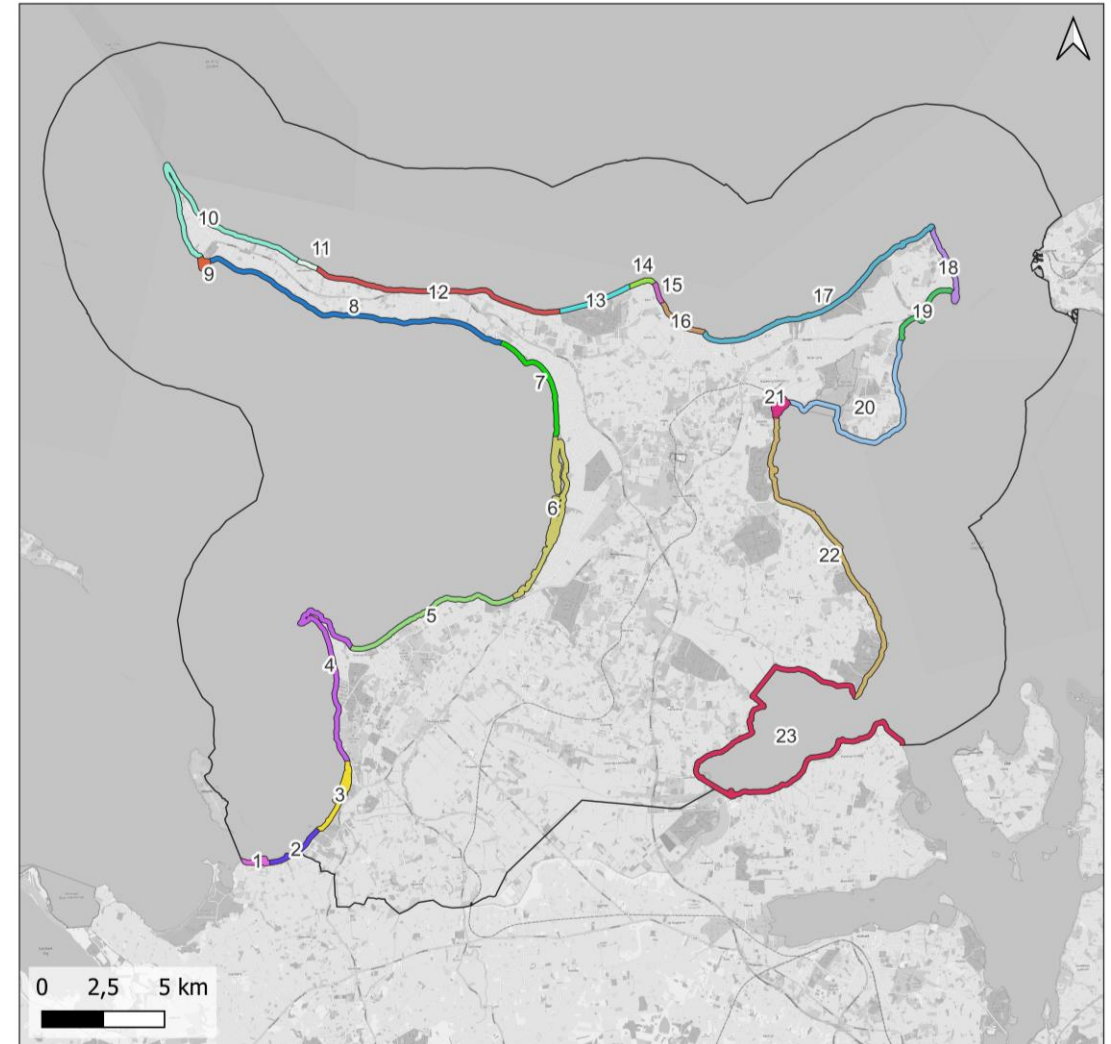
- Field survey: sounds, smells, colour, view
- Interviews: use of coast & sea, preferences



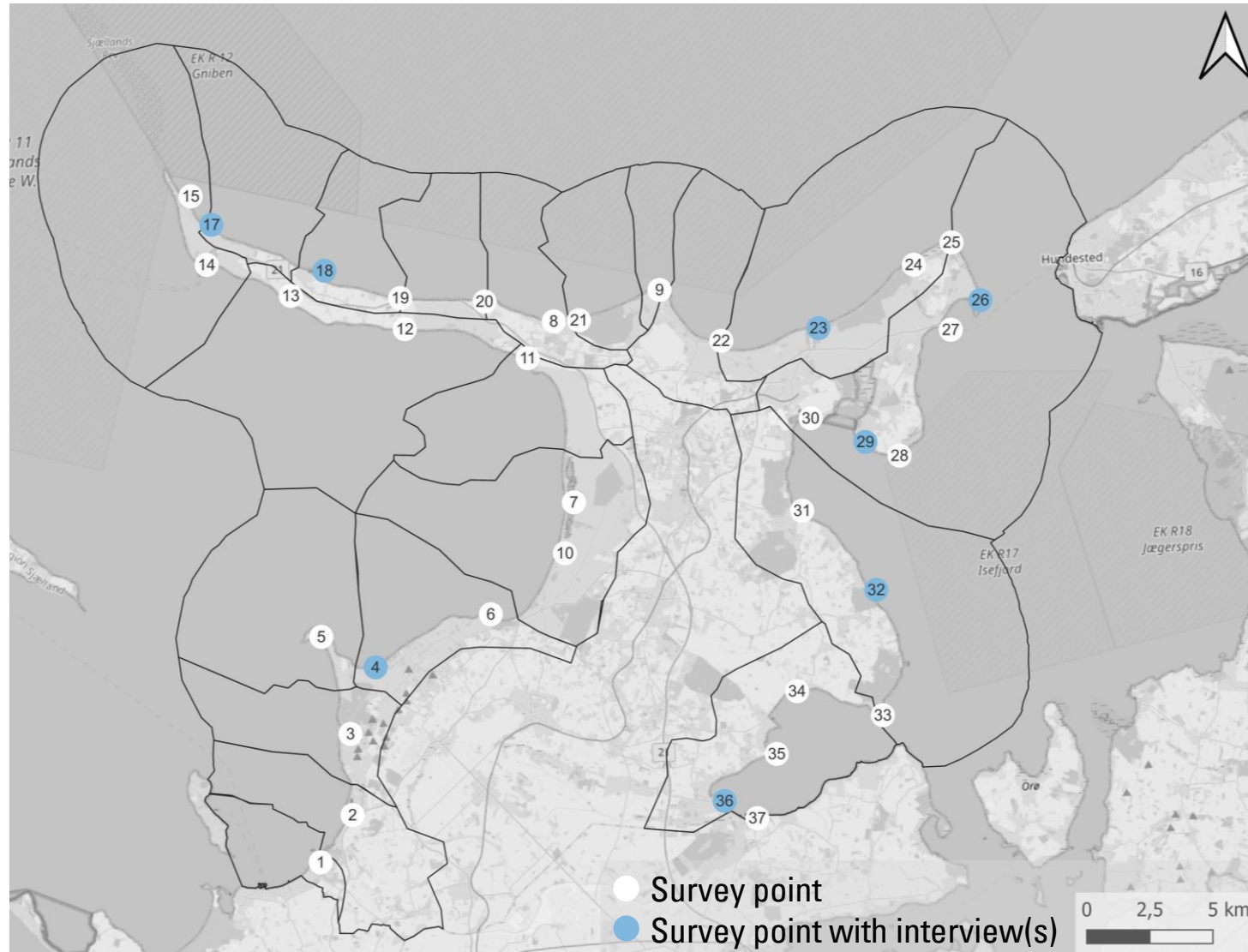
GIS ANALYSIS



VISUAL ANALYSIS



FIELD SURVEY



General	Seascape Area from desktop study
	Circumstances (date, time, weather conditions)
	Distinct topographic features of the land
Geology and topography	Distinct topographic features of the beach
	Distinct microtopography features
	Colour gradient in the water
	Coastal type
	Flood risk areas
Antropogenic effects	Human influence
	Land use and activities
	Connectivity between land and sea
	Pattern and positioning of buildings related to the sea
Nature and perception	Present plants and animals
	Smells and sounds
	Crowdedness
	Calmness/roughness of the sea
Visual analysis	Visual beacons
	Openness/closedness of the view
	Visibility obstacles
Other	Other characterizing features

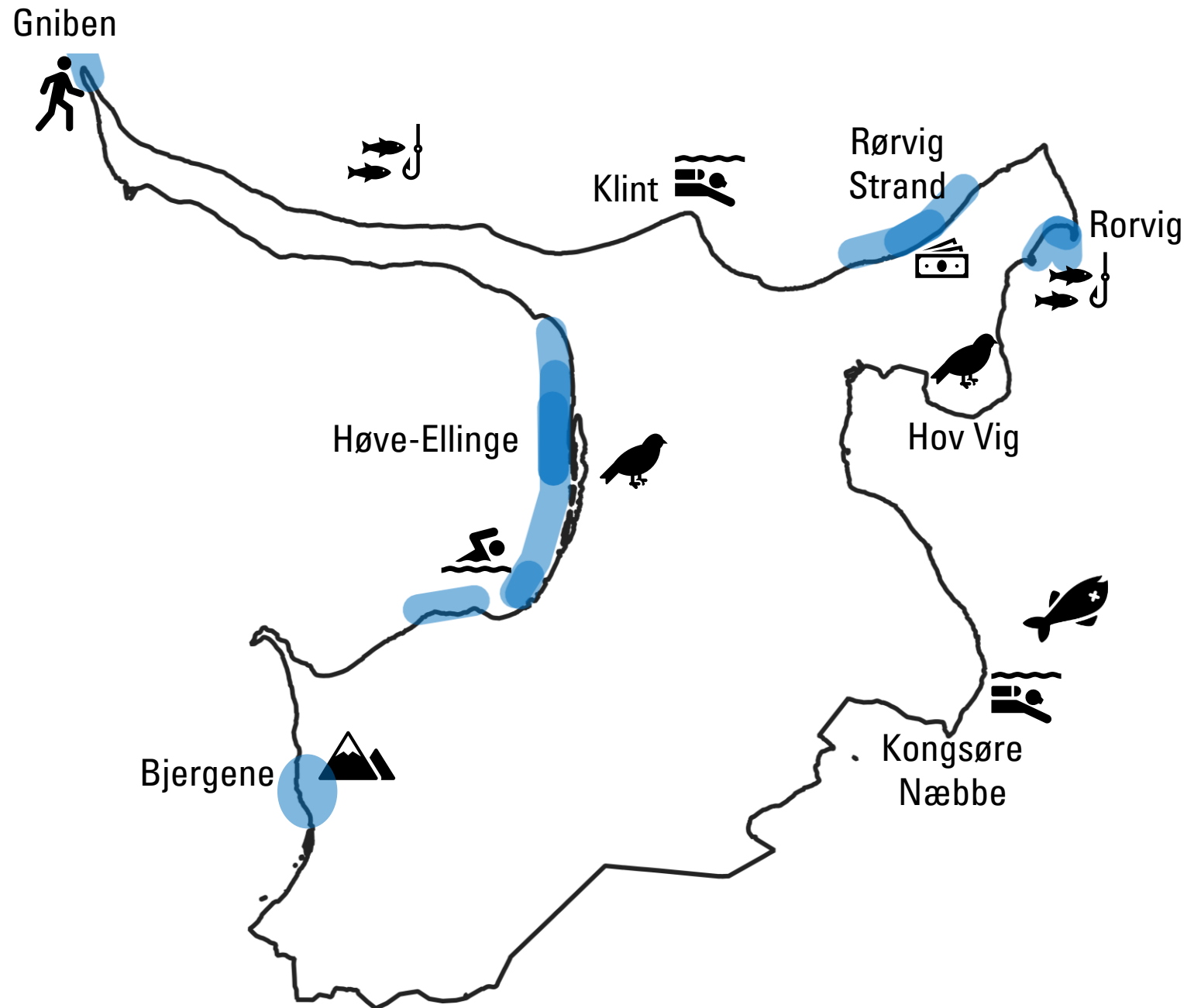


INTERVIEWS

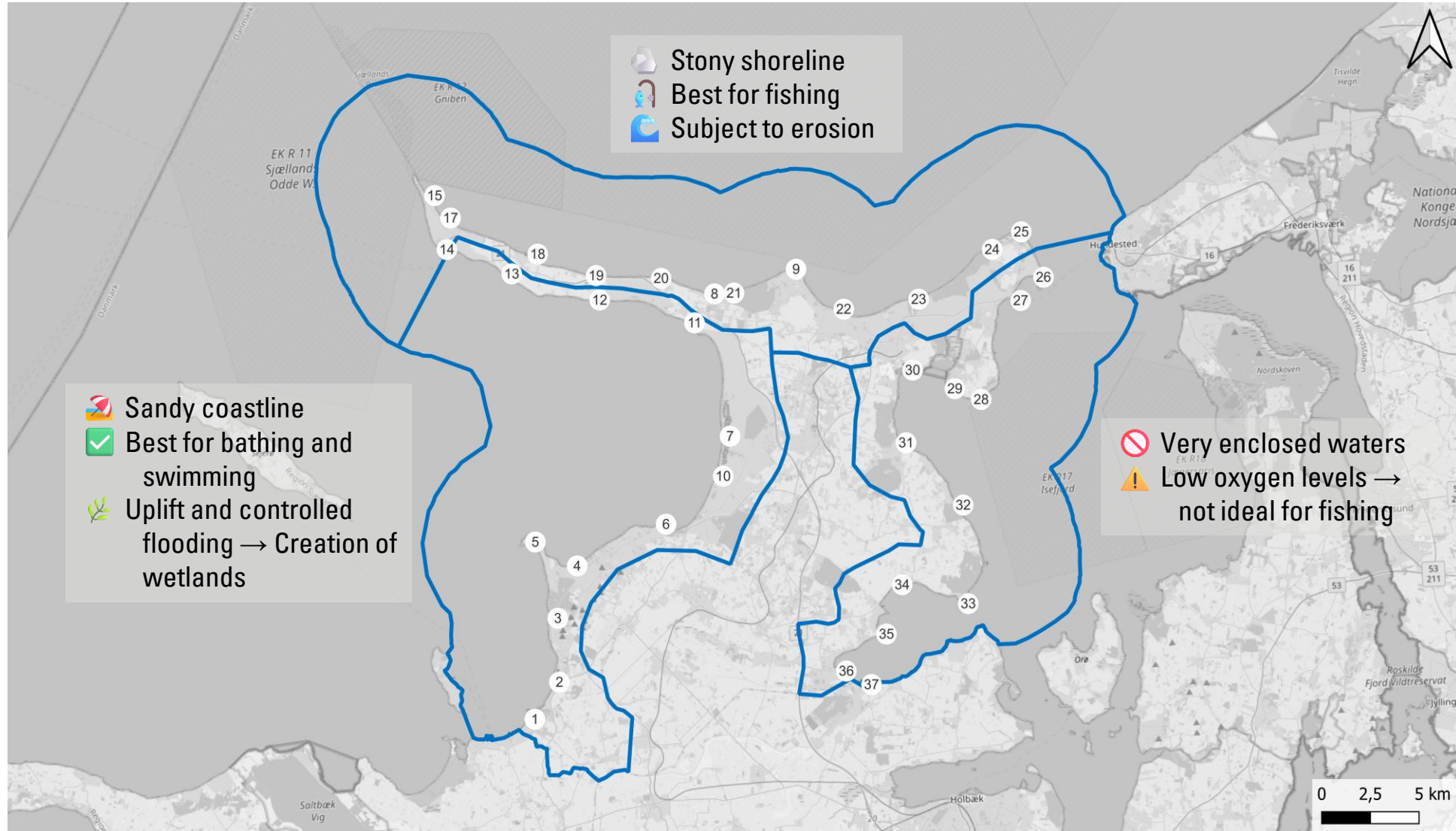
- 1) Do you live at the coast? Can you mark it on the map?
- 2) What do you use the coast and sea for? Which activities? (Fishing, walking, swimming...)
- 3) Can you mark a distinct coastal region of Odsherred on the map. Why would you define this as a distinct region?
- 4) Can you mark your favourite coastal region of Odsherred on the map? Why is this your favourite region?
- 5) We made these zones. Are there any zones that are similar and should be merged to one zone or are there zones that should be split up?

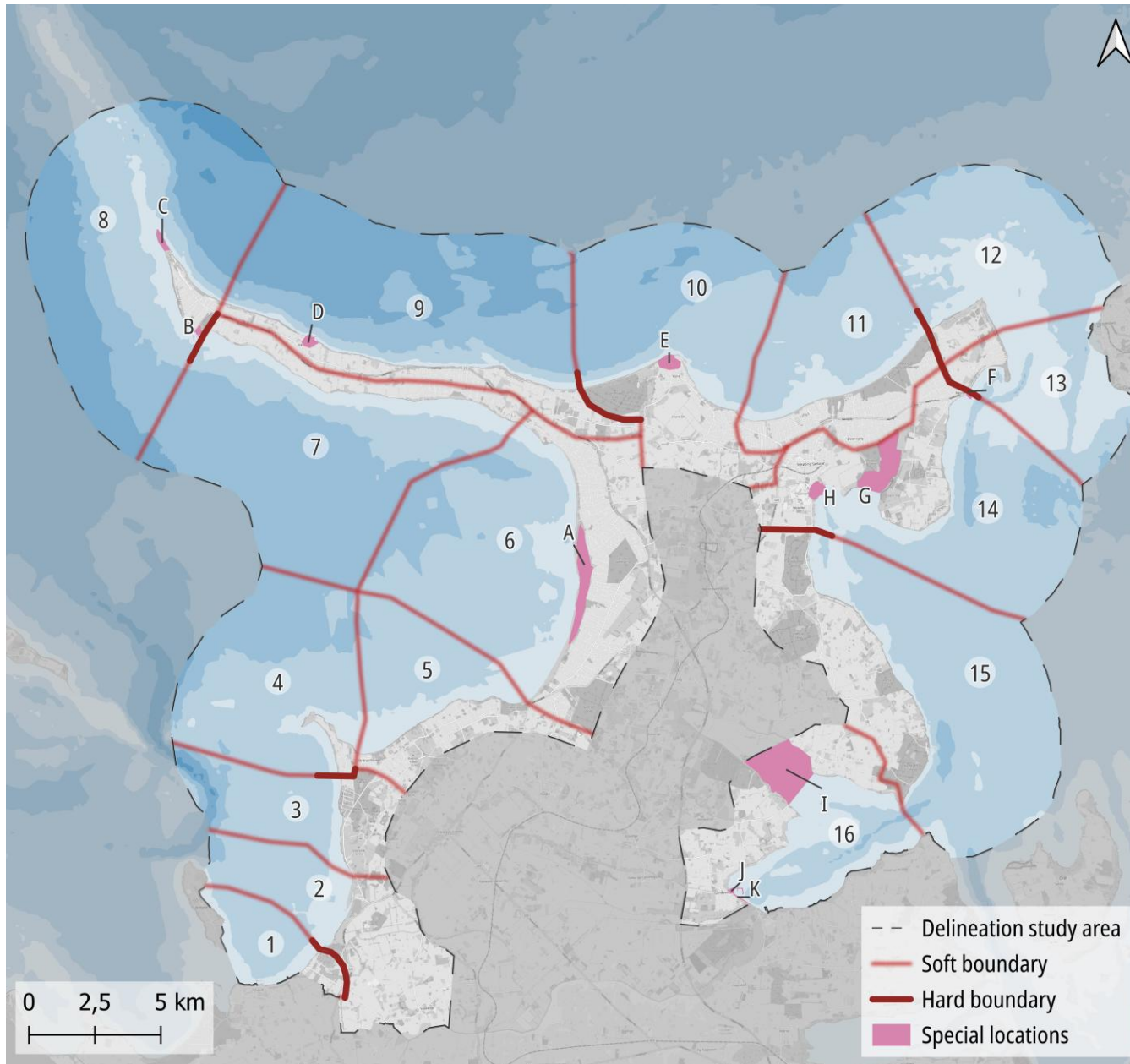
PERCEPTIONS AND ACTIVITIES

-  Walking
-  Swimming
-  Fishing
-  Scuba diving
-  Bird watching
-  Anoxic
-  Hill
-  Expensive housing
-  Favourite zone(s)



SUPER ZONES

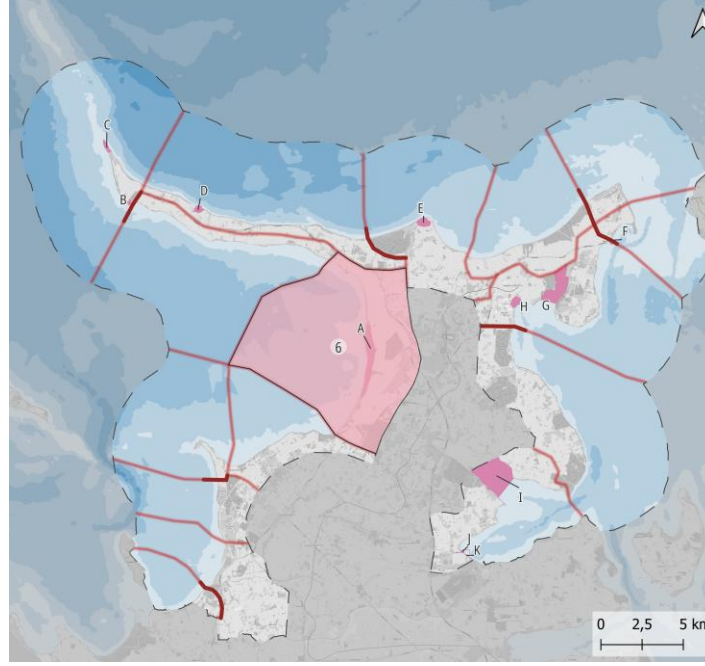




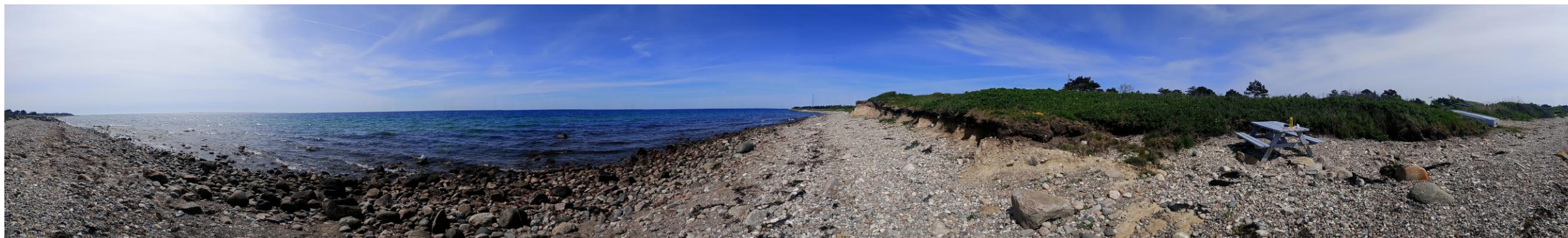
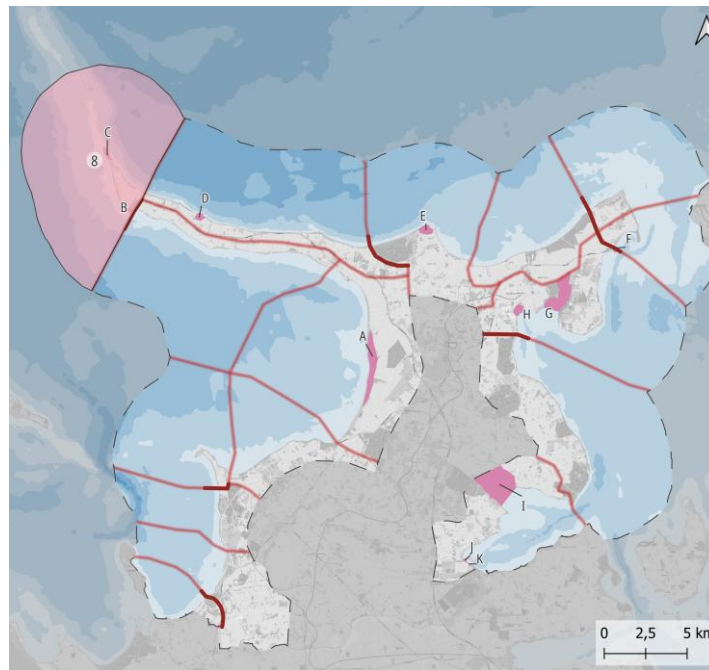
1. Starreklinde
2. Vindekilde
3. Bjergene Coast
4. Ordrup Næs
5. Veddinge Beach
6. Gudmindrup Strand
7. Sjællands Odde South Coast
8. Gniben
9. Sjællands Odde North Coast
10. Klint
11. Nyrup Bugt
12. Korshage
13. Skansehage
14. Nykøbing-Rørvig
15. Mid-Isefjord
16. Lammefjord

- | | |
|----------------------------|--------------------------------|
| A. Wetland | G. Hovvig Vigreservat |
| B. Odden-Aarhus Ferry Port | H. Nykøbing Port |
| C. Military Area | I. Egebjergvej dyke and polder |
| D. Havnebyen | J. Gundestrup Port |
| E. Klintebjerg | K. Nykøbingvej Dyke |
| F. Rørvig Port | |

GUDMINDRUP STRAND





GNIBEN





DISCUSSION – CHALLENGES AND STRENGTHS

- Challenges 
 - Field observations are snapshots
 - Different perceptions in data and field interpretation
- Strengths 
 - Systematic working approach
 - Clear task division: each team member had defined and complementary roles

TAKE HOME MESSAGES

- Systematic approach
- LCA as starting point for a Seascape Character Assessment

